

-
-
-
-
-
-
-



W

12 Vdc	90 ~ 305 Vac	0~3500 mA	42 W	84%	0.96	0.95	EUV-042S012PS ⁽³⁾
24 Vdc	90 ~ 305 Vac	0~1750 mA	42 W	86%	0.96	0.95	EUV-042S024PS ⁽³⁾
36 Vdc	90 ~ 305 Vac	0~1160 mA	42 W	87%	0.96	0.95	EUV-042S036PS ⁽³⁾
48 Vdc	90 ~ 305 Vac	0~875 mA	42 W	89%	0.96	0.95	EUV-042S048PS ⁽⁴⁾

100

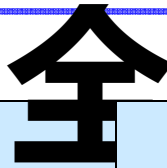
全

				IEC60598-1; 240Vac/ 60Hz
	-	-	0.6 A	
	-	-	0.3 A	
	-	-	70 A	
	-	-	0.16 A ² s	

全

全

	-5%Vo		5%Vo
Vo = 12 V	-	-	3 V
Vo = 24 V	-	-	4 V
Vo = 36 V	-	-	4 V
Vo = 48 V	-	-	4 V
Vo = 12 V	-	-	16 V
Vo = 24 V	-	-	28 V
Vo = 36 V	-	-	40 V
Vo = 48 V	-	-	52 V
			10%Vo
	-	-	±2%

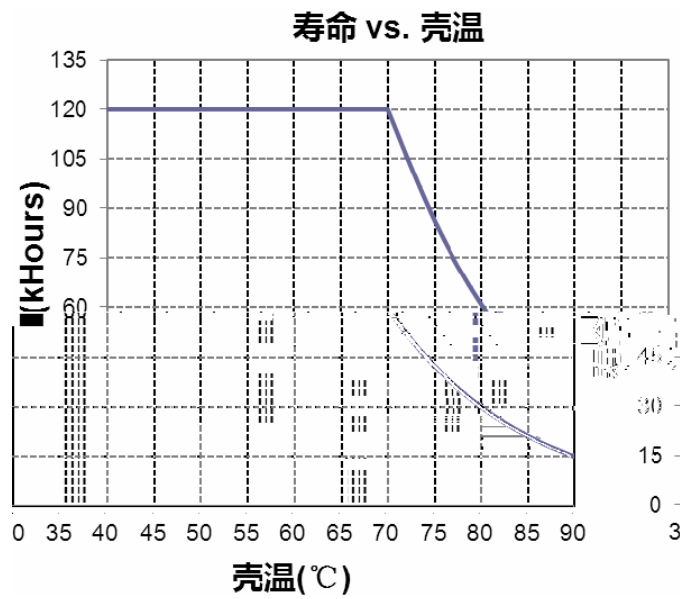


	327,000 hours	-	-	
	-	116,000 Hours	-	
		-	+90	
			+70	
			+85	
	3.74 × 2.76 × 1.26 95 × 70 × 32			

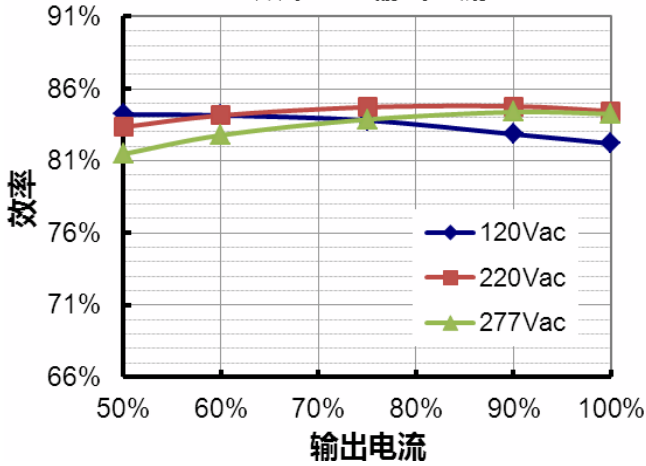
o

UL/CUL	UL8750, UL 1310, CAN/CSA-C22.2 No. 250.13, CAN/CSA-C22.2 No. 223-M91
CE	EN 61347-1, EN61347-2-13
KS	KS C 7655
EN 55015 ⁽¹⁾	Conducted Emission Test & Radiated Emission Test
EN 61000-3-2	Harmonic current emissions
EN 61000-3-3	Voltage fluctuations & flicker
FCC Part 15 ⁽¹⁾	ANSI C63.4 Class B
	This device complies with Part 15 of the FCC Rules. Operation is subject to the following two conditions: [1] this device may not cause harmful interference, and [2] this device must accept any interference received, including interference that may cause undesired operation.
EMS	
EN 61000-4-2	Electrostatic Discharge (ESD): 8 kV air discharge, 4 kV contact discharge
EN 61000-4-3	Radio-Frequency Electromagnetic Field Susceptibility Test-RS

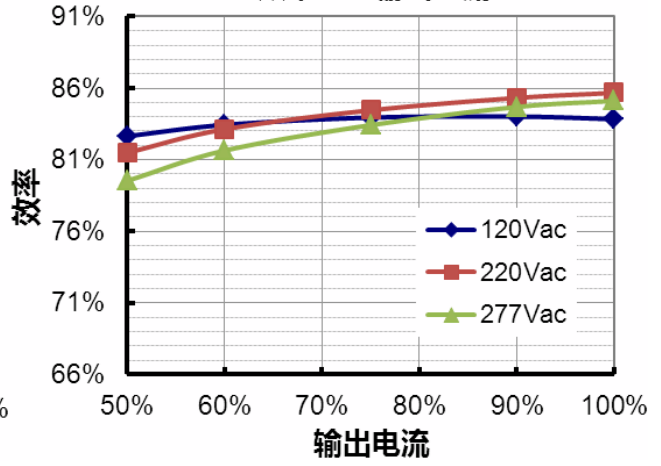
EMS	
EN 61000-4-4	Electrical Fast Transient / Burst-EFT
EN 61000-4-5	Surge Immunity Test: AC Power Line: Differential Mode 2 kV
EN 61000-4-6	Conducted Radio Frequency Disturbances Test-CS
EN 61000-4-8	Power Frequency Magnetic Field Test
EN 61000-4-11	Voltage Dips
EN 61547	Electromagnetic Immunity Requirements Applies To Lighting Equipment



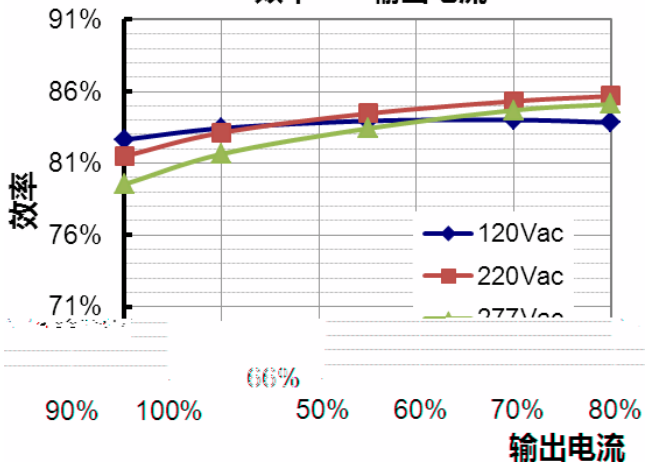
EUV-042S012PS
效率 vs. 输出电流



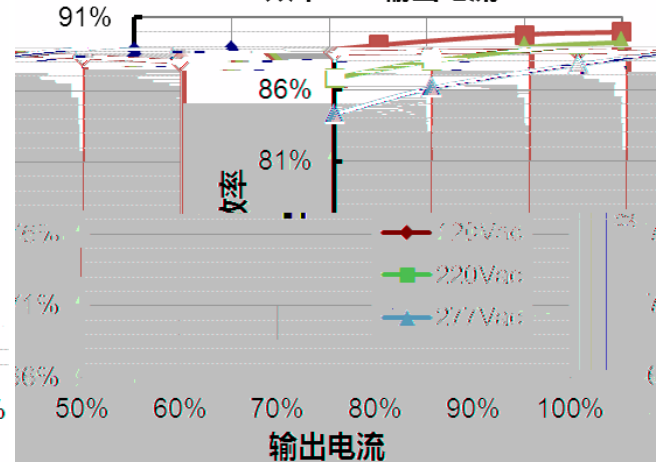
EUV-042S024PS
效率 vs. 输出电流

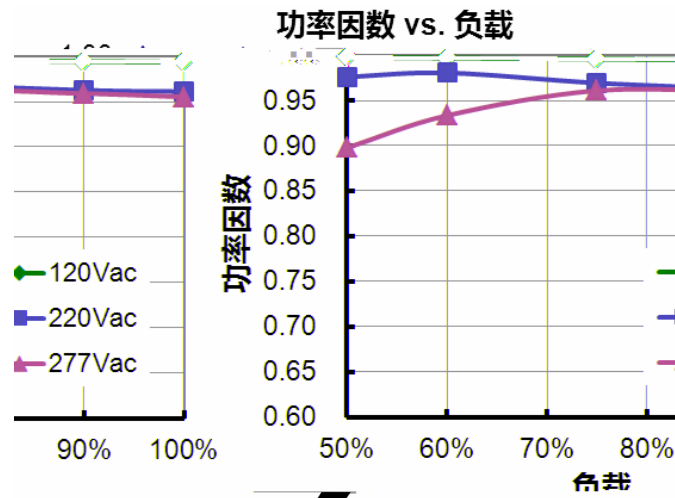


EUV-042S036PS
效率 vs. 输出电流



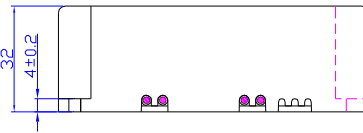
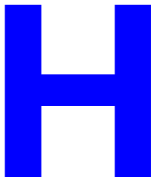
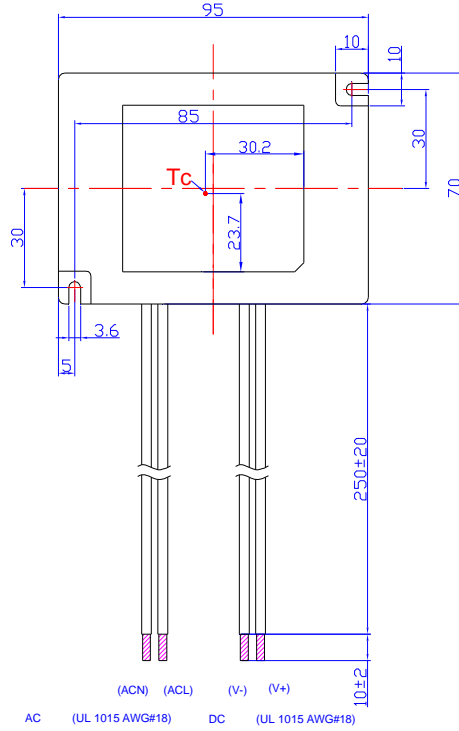
EUV-042S048PS
效率 vs. 输出电流





全

	1.1 lo	1.4 lo	1.7 lo	



PROJ :±1

