

	-	-	0.75 MIU	UL8750; 277Vac/60Hz
	-	-	0.70 mA	IEC60598-1; 240Vac/60Hz
	-	-	0.68 A	100% 120Vac
	-	-	0.35 A	100% 220Vac
I^2t	-	-	0.52 A ² s	220Vac 25 10%Ipk-10%Ipk = 376μs
	0.90	-	-	100-277Vac, 50-60Hz 75%-100%
	-	-	20%	(45~ 60W)
	-	-	10%	120-240Vac, 50-60Hz 75%-100%
				(45~ 60W)

	-5%loset	-	5%loset	100%
(loset) LUR-060S105ST LUR-060S150ST	700 mA 1100 mA	- -	1050 mA 1500 mA	
LUR-060S105ST LUR-060S150ST	700 mA 1100 mA	- -	1050 mA 1500 mA	
(pk-pk)	-	5%lomax	10%lomax	100%
< 200Hz (pk-pk)	-	2%lomax	-	100%
	-	-	10%lomax	100%
LUR-060S105ST LUR-060S150ST	- -	- -	120V 60V	
	-	-	±1.0%	100%
	-	-	±5.0%	
	-	-	0.5 s	120-277Vac 75%-100%
	-	0.06%/°C	-	= 0°C~ Tc

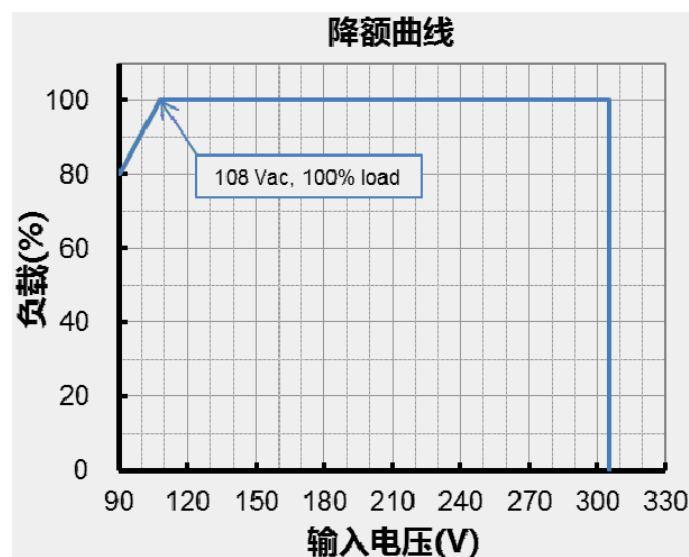
@120Vac LUR-060S105ST I _o = 700 mA I _o =1050 mA LUR-060S150ST I _o =1100 mA I _o =1500 mA	84.5% 84.0% 83.5% 82.0%	86.5% 86.0% 85.5% 84.0%	- - - -	100% 25°
@220Vac LUR-060S105ST I _o = 700 mA I _o =1050 mA LUR-060S150ST I _o =1100 mA I _o =1500 mA	87.5% 87.5% 86.5% 85.0%	89.5% 89.5% 88.5% 87.0%	- - - -	100% 25°
@277Vac LUR-060S105ST I _o = 700 mA I _o =1050 mA LUR-060S150ST I _o =1100 mA I _o =1500 mA	88.0% 88.0% 87.0% 85.5%	90.0% 90.0% 89.0% 87.5%	- - - -	100% 25°
	-	434,000 Hours	-	220Vac 25 80% (MIL- HDBK-217F)
	-	94,000 Hours	-	120Vac 80% 70
	-40 °C	-	+85 °C	
	-40 °C	-	+75 °C	5 湿度: 10%RH to 90%RH
	-40 °C	-	+85 °C	: 5%RH to 95%RH
(× H) (× H)	3.54 x 1.81 90 x 46			
	-	415 g	-	

UL/CUL	UL 8750, UL 1310, CAN/CSA-C22.2 No. 250.13, CAN/CSA-C22.2 No. 223-M91
CE	EN 61347-1, EN61347-2-13
CB	IEC 61347-1, IEC 61347-2-13
CCC	GB 19510.1, GB 19510.14
KS	KS C 7655

EMI	
EN 55015/GB 17743 ⁽¹⁾	Conducted emission Test & Radiated emission Test
EN 61000-3-2/GB 17625.1	Harmonic current emissions
EN 61000-3-3	Voltage fluctuations & flicker
FCC Part 15 ⁽¹⁾	ANSI C63.4 Class B
	This device complies with Part 15 of the FCC Rules. Operation is subject to the following two conditions: [1] this device may not cause harmful interference, and [2] this device must accept any interference received, including interference that may cause undesired operation.
EMS	
EN 61000-4-2	Electrostatic Discharge (ESD): 8 kV air discharge, 4 kV contact discharge
EN 61000-4-3	Radio-Frequency Electromagnetic Field Susceptibility Test-RS
EN 61000-4-4	Electrical Fast Transient / Burst-EFT
EN 61000-4-5	Surge Immunity Test: AC Power Line: Differential Mode 4 kV, Common Mode 6kV
EN 61000-4-6	Conducted Radio Frequency Disturbances Test-CS
EN 61000-4-8	Power Frequency Magnetic Field Test
EN 61000-4-11	Voltage Dips
EN 61547	Electromagnetic Immunity Requirements Applies To Lighting Equipment

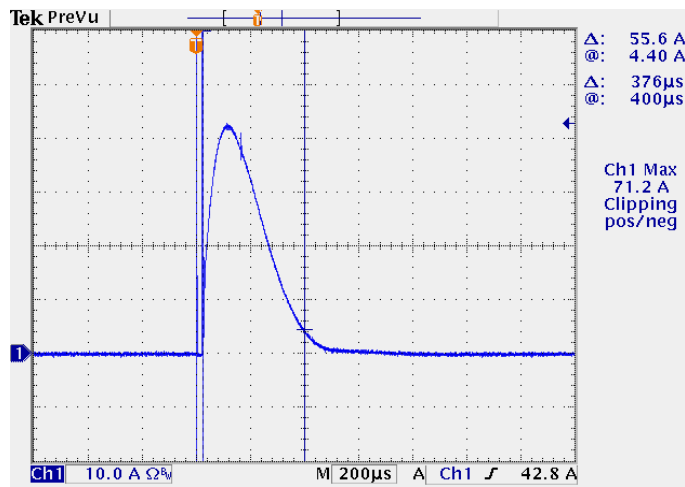
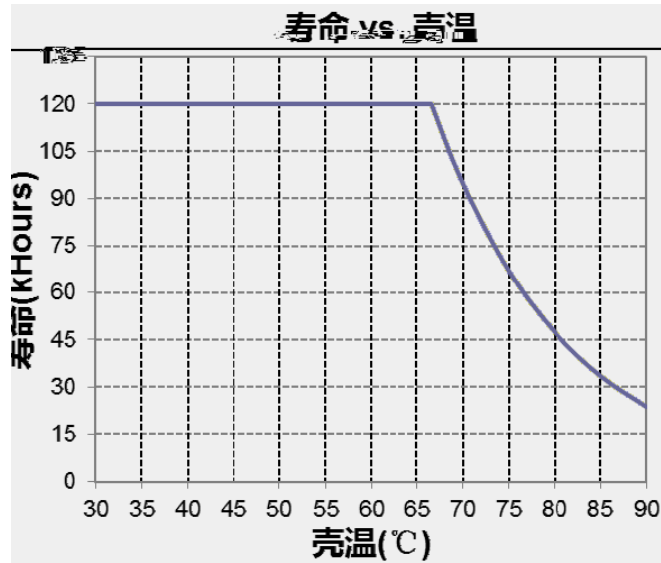
1 EMI

() EMI



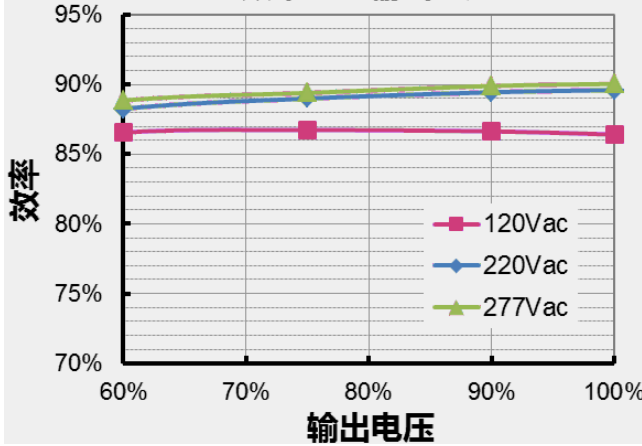
4 / 8

25°C



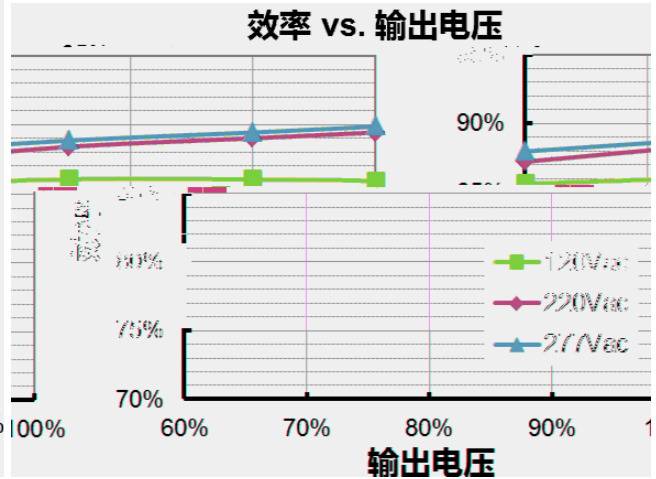
LUR-060S105ST($I_o=700mA$)

效率 vs. 输出电压



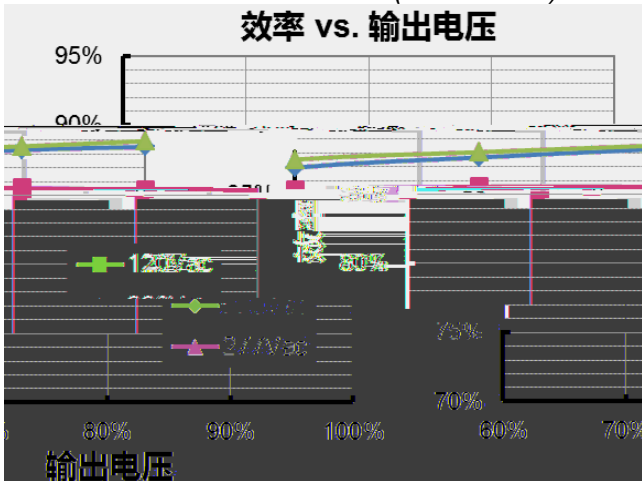
LUR-060S105ST($I_o=1050mA$)

效率 vs. 输出电压



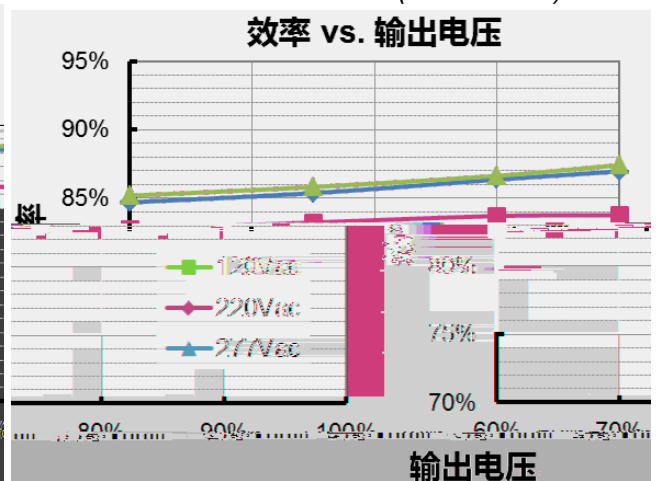
LUR-060S150ST($I_o=1100mA$)

效率 vs. 输出电压

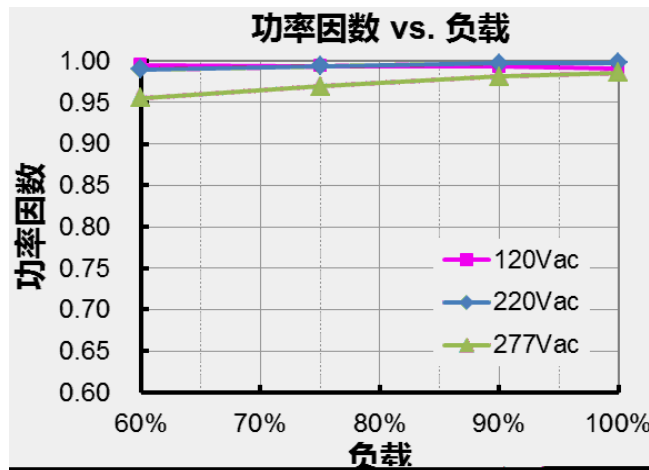


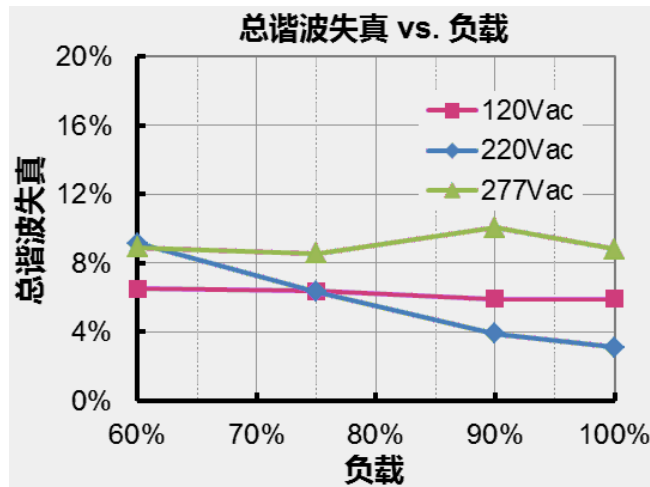
LUR-060S150ST($I_o=1500mA$)

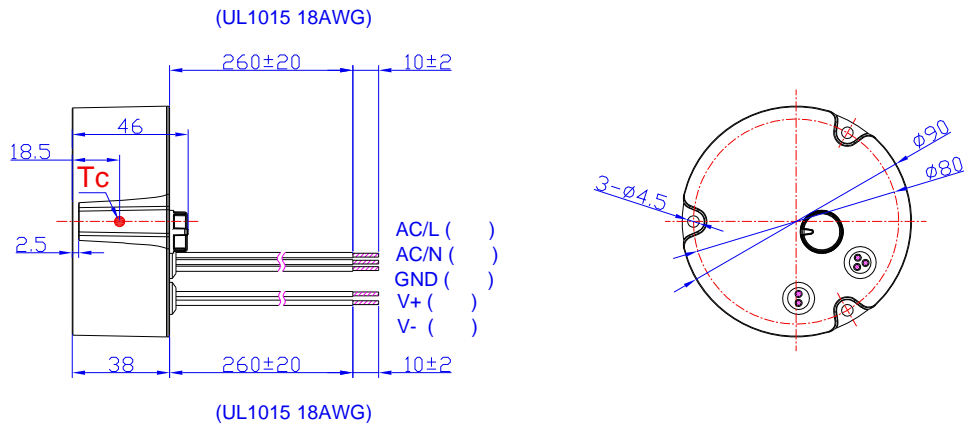
效率 vs. 输出电压



功率因数 vs. 负载







PROJ:

: ±1

RoHS

RoHS 2011/65/EU

EU 2015/863

7 / 8

25°C

2020-09-03	A		/	/